

Framework 10

Information Framework R9.0

Product Conformance Certification Report

Tektronix IRIS Application Suite

Release 11.3

January 2012



Table of Contents

Table of Contents	2
List of Figures	3
List of Tables	4
1 Introduction	5
1.1 Executive Summary	5
1.2 Tektronix IRIS Application Suite, Release 11.3 Functionality/Capability	5
1.3 Mapping Technique Employed.....	5
2 Assessment Scope	6
2.1 Information Framework Scope and Mapping	6
2.2 Product Scope.....	7
3 Information Framework (SID) Conformance	8
3.1 Information Framework – Conformance Overview	8
3.1.1 Common Business Entities Domain – Conformance Result.....	10
3.1.2 Service Domain – Conformance Result	11
3.1.3 Resource Domain – Conformance Result.....	12



List of Figures

Figure 2.1 Information Framework – Tektronix IRIS Application Suite Assessment Scope.....	6
Figure 2.2 Tektronix IRIS Application Suite, Release 11.3 – Product Scope.....	7
Figure 3.1 Tektronix IRIS Application Suite Release 11.3 – Conformance Scores	8
Figure 3.2 TM Forum Information Framework – Conformance Scoring Rules	9



List of Tables

Table 3.1 Common Business Entities Domain ABEs — Conformance Scores	10
Table 3.2 Service Domain ABEs – Conformance Scores	11
Table 3.5 Resource Domain ABEs – Conformance Scores	12

1 Introduction

1.1 Executive Summary

This document provides details of the Tektronix self-assessment and TM Forum's certification of the Tektronix IRIS Application Suite, Release 11.3 product against TM Forum's Information Framework Release 9.0 Domains/Aggregate Business Entities.

1.2 Tektronix IRIS Application Suite, Release 11.3 Functionality/Capability

Tektronix Communications Iris Suite framework provides a seamless user experience across a wide range of powerful network management tools. Iris Suite provides single sign-on access to IrisTouchPoint Customer Experience Management (CEM), Performance Intelligence (IPI), Iris Traffic Analyzer (ITA), Iris Session Analyzer (ISA), Protocol Analyzer (PA) and Iris Automated Control Engine (ACE). The Iris Suite graphical user interface consolidates these network-, service- and customer-focused applications regardless of the underlying data sources. Iris Suite's web services based design will enable easy integration of additional network management tools.

1.3 Mapping Technique Employed

Based on the certification scope the list of ABEs (Aggregate Business Entities) is defined. The entities, association classes and dependent entities for each ABE in scope are allocated for the assessment.

SID model files and addendum specifications are analyzed for the entities' and association classes' definitions to determine their roles. Attributes explicit to the entities and association classes as well as inherited attributes are listed.

This information is used to map each entity's or association class' attribute to the appropriate product's attribute to show how the model is supported. For each (when needed) mapping item - attribute type, possible values and comments are provided.

2 Assessment Scope

2.1 Information Framework Scope and Mapping

Figure 2.1 illustrates the Information Framework Level 1 ABEs (blue border) that were presented in scope for the Assessment, and the textual callouts represent the domain areas of the Tektronix IRIS Application Suite that were assessed and support the corresponding SID ABEs.

L1 Information Framework (SID)

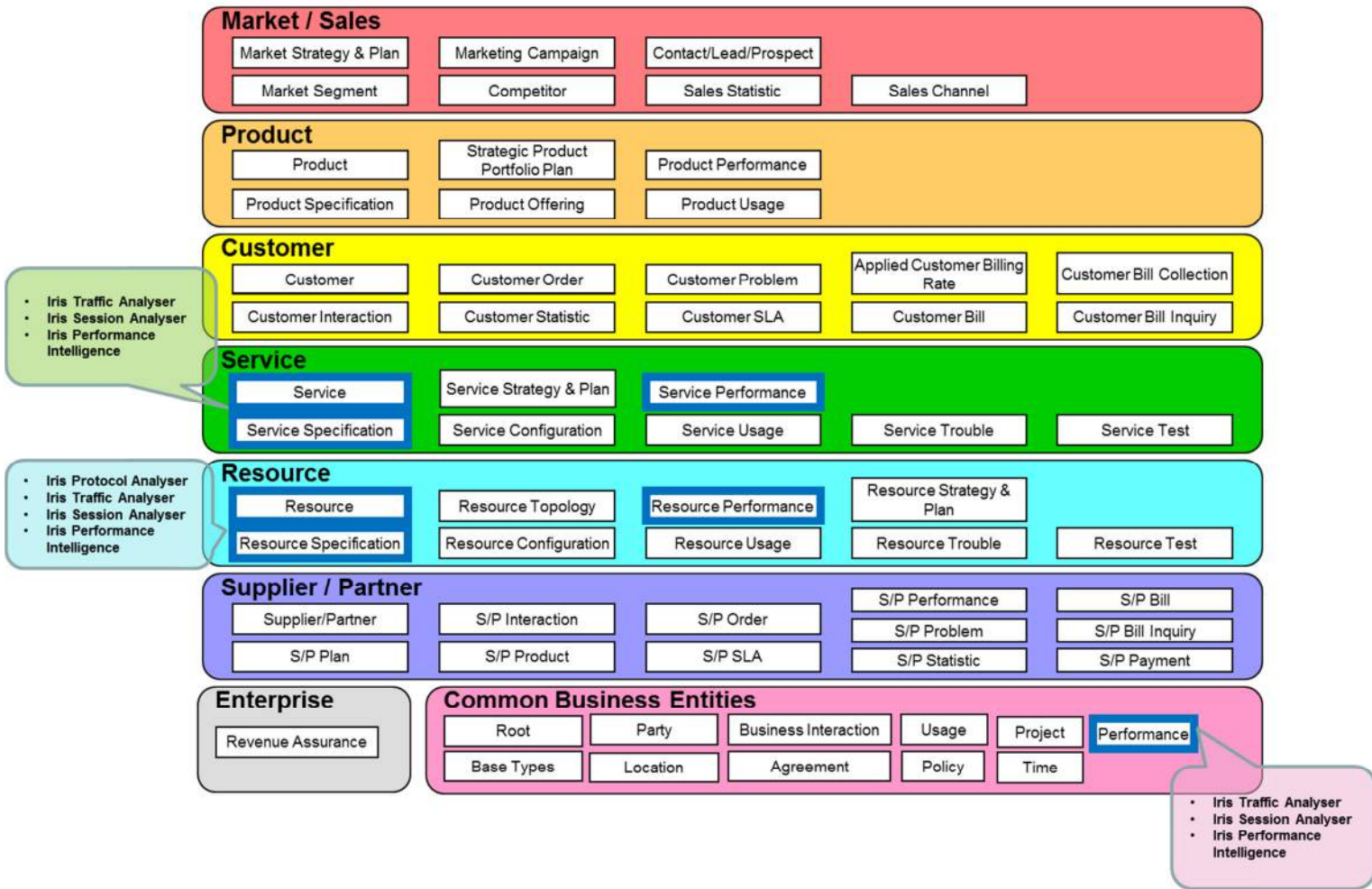


Figure 2.1 Information Framework – Tektronix IRIS Application Suite Assessment Scope

2.2 Product Scope

Figure 2.2 illustrates the Tektronix IRIS Application Suite, Release 11.3 with the domains that were presented in scope bordered in blue. The textual callouts represent the TM Forum Aggregate Business Entities (ABEs) that were assessed and are supported by the corresponding Tektronix domains.

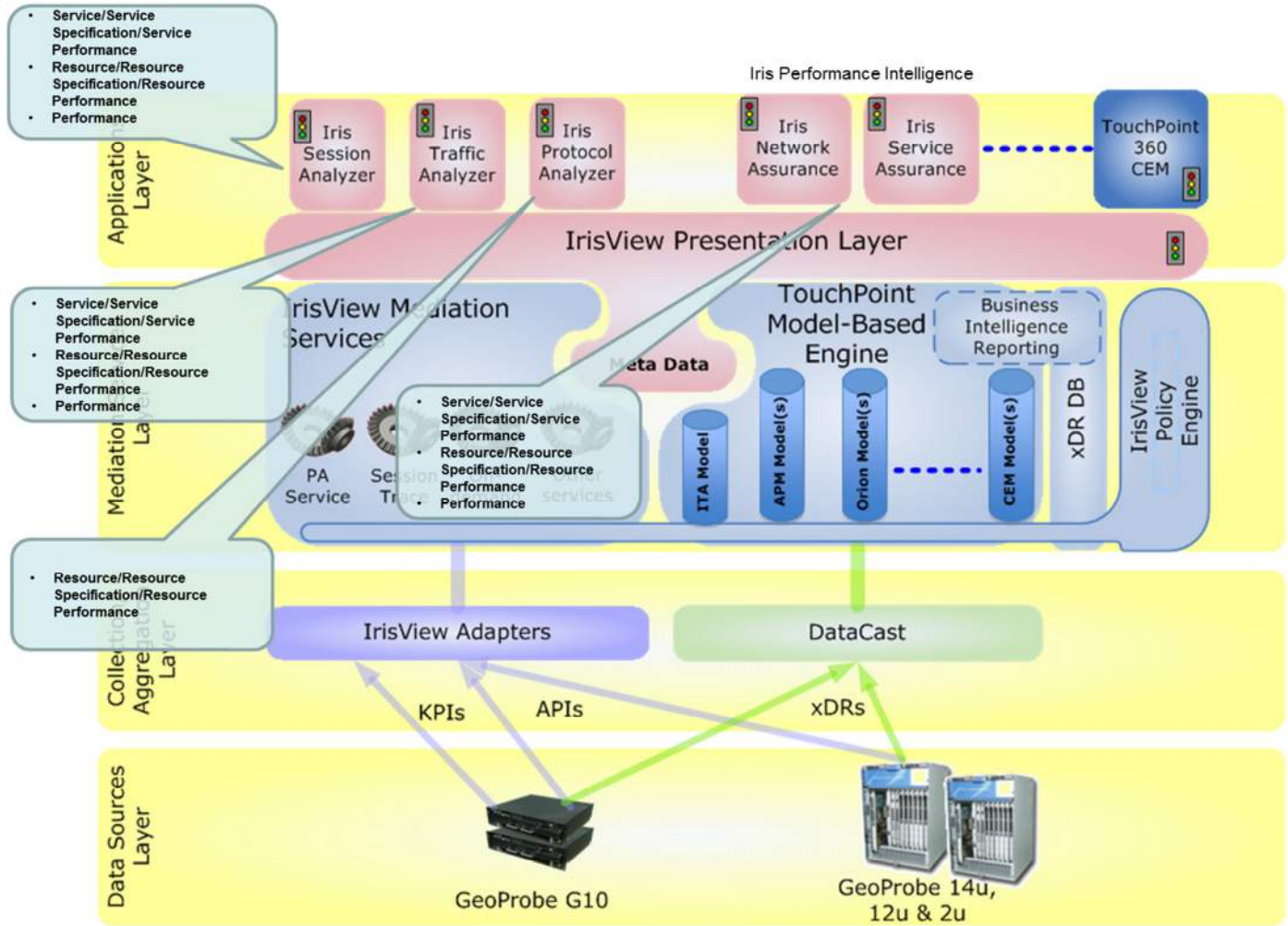


Figure 2.2 Tektronix IRIS Application Suite, Release 11.3 – Product Scope

3 Information Framework (SID) Conformance

3.1 Information Framework – Conformance Overview

The following chart is an overview of the conformance scores granted to the ABEs presented in scope for the Tektronix IRIS Application Suite, Release 11.3 Information Framework Assessment. Each ABE was measured using an Information Framework (SID) conformance scale of 1–7, with 1 being lowest, 3 being the acceptable minimum, and 7 being the highest level of conformance.

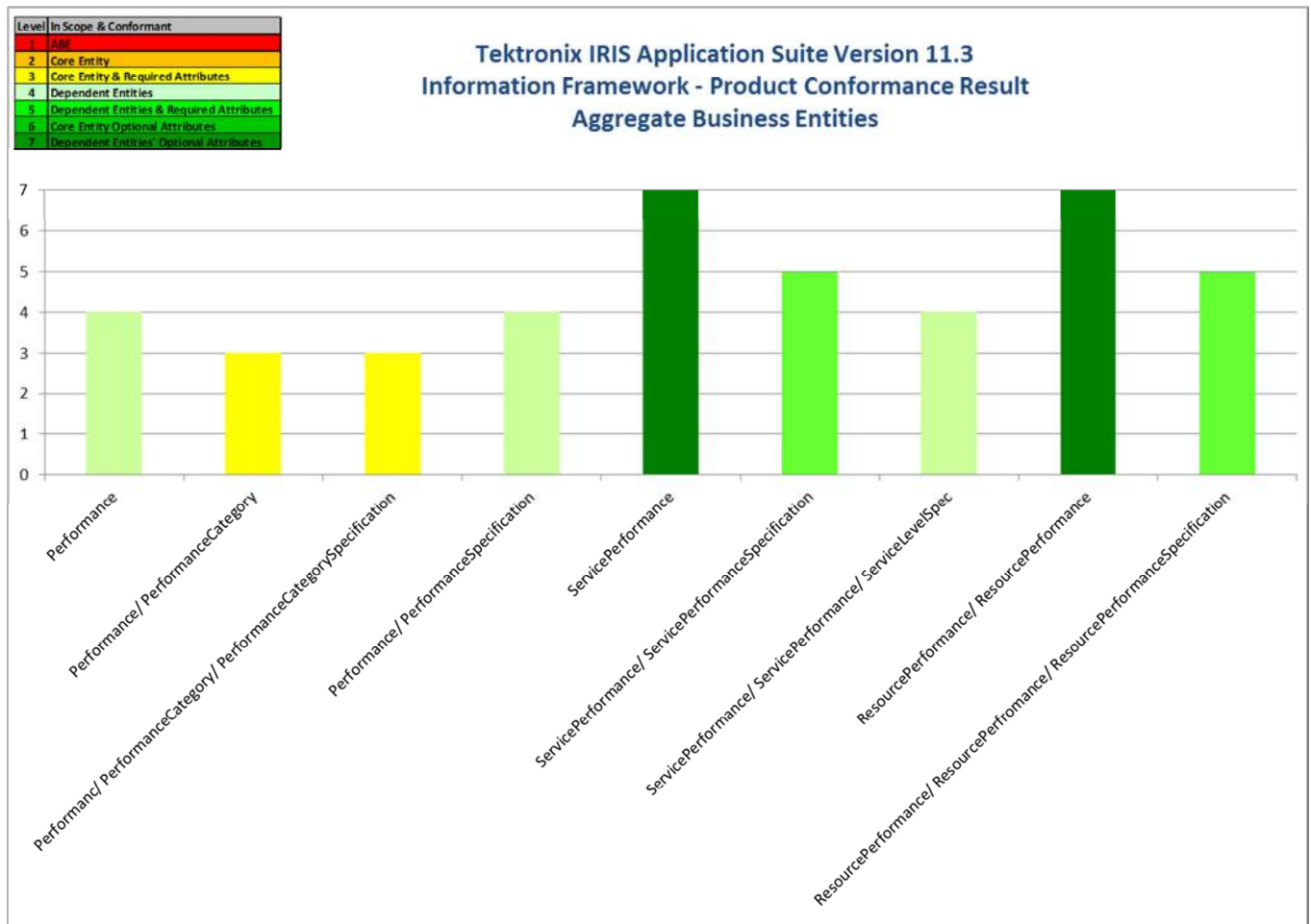


Figure 3.1 Tektronix IRIS Application Suite Release 11.3 – Conformance Scores



The conformance scores granted were based on the following TM Forum scoring rules:

Product & Solution: Information Framework (SID) Conformance Score Descriptions	
Conformance Score	Qualifier
Conformance Score 1	The content of the model is compatible with a subset of the Information Framework (SID) ABEs that define its domain coverage. This provides two interacting components/solutions with a common vocabulary and model structure. The subset represents the scope of the model, expressed in Information Framework (SID) domains and ABEs.
Conformance Score 2	The model has achieved Conformance Score of 1 and the content of the ABE, part of the domain coverage and defined in the model, contains the ABE’s core business entity or entities.
Conformance Score 3	The model has achieved Conformance Score of 2 and the required attributes of the ABE’s core entity or entities are defined in the model.
Conformance Score 4	The model has achieved Conformance Score of 3 and dependent entities within the ABE’s are defined in the model.
Conformance Score 5	The model has achieved Conformance Score of 4 and the required attributes of the ABE’s dependent entities are defined in the model.
Conformance Score 6	The model has achieved Conformance Score of 5 and all attributes of the ABE’s core entities are defined in the model.
Conformance Score 7	The model has achieved Conformance Score of 6 and all attributes of the ABE’s dependent entities are defined in the model.

Figure 3.2 TM Forum Information Framework – Conformance Scoring Rules

Notes:

A **core business entity** is an entity upon which other entities within the ABE are dependent. For example, Service in the Service ABE. A model should strive to attain as high a level of Information Framework (SID) conformance as possible. A core entity is also an entity whose absence in the ABE would make the ABE incomplete.

A **dependent entity** is one whose instances are dependent on an instance of a core entity. For example, a ServiceCharacteristic instance within the Service ABE is dependent upon an instance of the Service entity.

Tektronix Note: Tektronix Communications Iris Suite of Applications is based on Network/Service/Customer intelligence collected 24X7, which provides unique values for this type of management solutions. As a result, some of the attributes designed to accommodate other types of management systems may not apply. Tektronix Communications will continue to support the on-going evolution of Framework suite of standards as part of the Collaboration development by TM Forum’s member companies.

Information Framework – Detailed Conformance Result

3.1.1 Common Business Entities Domain – Conformance Result**Table 3.1 Common Business Entities Domain ABEs – Conformance Scores**

Information Framework (SID) Domain	Information Framework (SID) ABE	Conformance Score	Comment
Common Business Entities	Performance	4	Core entity, required attributes, dependent entities.
	Performance/ PerformanceCategory	3	Core entity, required attributes. TM Forum Note: Assessment missing the PerformanceCatSpecificationValue dependent entity.
	Performanc/ PerformanceCategory/ PerformanceCategorySpecification	3	Core entity, required attributes. TM Forum Note: Assessment missing the use of the Characteristic Specification ABE.
	Performance/ PerformanceSpecification	4	Core entity, required attributes, dependent entities.



3.1.2 Service Domain – Conformance Result

Table 3.2 Service Domain ABEs – Conformance Scores

Information Framework (SID) Domain	Information Framework (SID) ABE	Conformance Score	Comment
	ServicePerformance	7	<p>Core entity, required attributes, dependent entities, required attributes of dependent entities, all attributes of the core entity and all attributes of dependent entities.</p> <p>TM Forum Notes: 1. See conformance score for the Performance ABE 2. A score of 7 was given, even though there are no dependent entities in this ABE. This is consistent with other scoring for ABEs with no dependent entities.</p>
	ServicePerformance/ ServicePerformanceSpecification	5	<p>Core entity, required attributes.</p> <p>TM Forum Notes: 1. See conformance score for the Performance Specification ABE 2. A score of 5 was given, even though there are no dependent entities in this ABE. This is consistent with other scoring for ABEs with no dependent entities.</p>
	ServicePerformance/ ServicePerformance/ ServiceLevelSpec	4	<p>Core entity, required attributes, dependent entities.</p>



3.1.3 Resource Domain – Conformance Result

Table 3.3 Resource Domain ABEs – Conformance Scores

Information Framework (SID) Domain	Information Framework (SID) ABE	Conformance Score	Comment
	ResourcePerformance/ ResourcePerformance	7	<p>Core entity, required attributes, dependent entities, required attributes of dependent entities, all attributes of the core entity and all attributes of dependent entities.</p> <p>TM Forum Notes:</p> <ol style="list-style-type: none"> 1. See conformance score for the Performance ABE 2. A score of 7 was given, even though there are no dependent entities in this ABE. This is consistent with other scoring for ABEs with no dependent entities.
	ResourcePerformance/ ResourcePerfromance/ ResourcePerformanceSpecification	5	<p>Core entity, required attributes, dependent entities, required attributes of dependent entities.</p> <p>TM Forum Notes:</p> <ol style="list-style-type: none"> 1. See conformance score for the Performance Specification ABE 2. A score of 5 was given, even though there are no dependent entities in this ABE. This is consistent with other scoring for ABEs with no dependent entities.